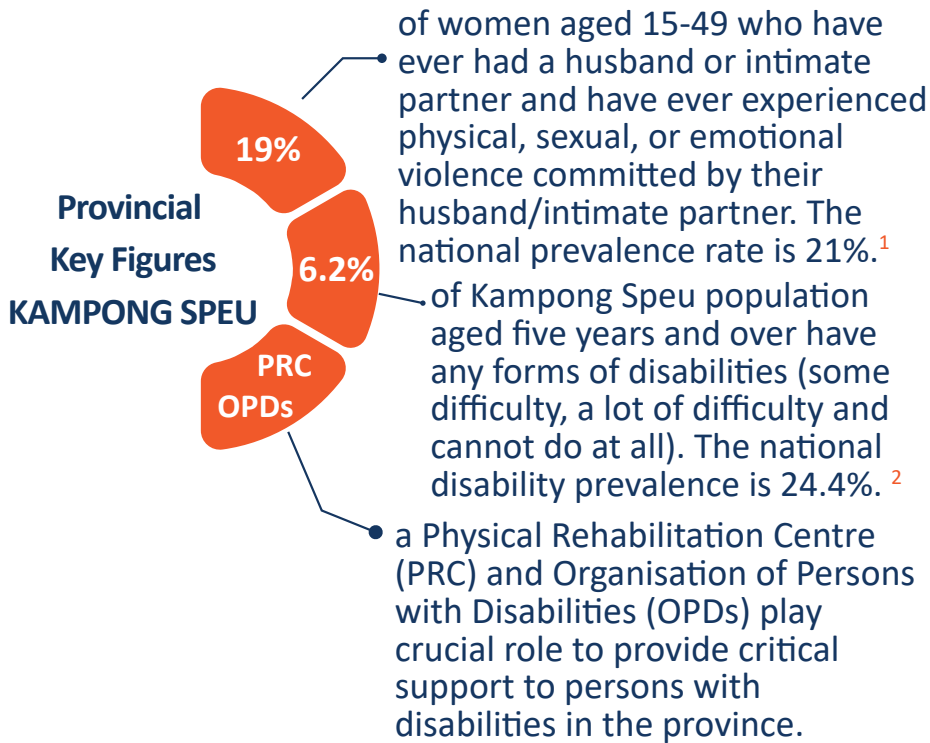


## AUSTRALIA-CAMBODIA COOPERATION FOR EQUITABLE SUSTAINABLE SERVICES - PHASE 2 (ACCESS 2) IN KAMPONG SPEU

The ACCESS 2 Program marks a continuation of Australia's flagship bilateral investment in gender equality, disability, and social inclusion in Cambodia.



### ACCESS 2 Partners

ACCESS 2 will continue working with national and sub-national level government and civil society including Non-Governmental Organisations (NGOs), OPDs, women's and indigenous people's organisations to effectively implement the Royal Government of Cambodia (RGC)'s National Action Plan to Prevent Violence Against Women (NAPVAW) and the National Disability Strategic Plan (NDSP).

<sup>1</sup> Cambodia Demographic and Health Survey 2021-2022

<sup>2</sup> Persons with disabilities in Cambodia: Finding from the Cambodia Demographic and Health Survey, 2014 & 2021-2022

### Disability Inclusion

- Provincial Disability Action Council (P-DAC)
- Provincial Department of Social Affairs, Veterans and Youth Rehabilitation (PoSVY)
- Provincial Health Department (PHD)
- Organisations of Persons with Disabilities (OPDs)/Women With Disabilities Forums (WWDFs)
- Cambodian Disabled People's Organisation (CDPO)
- People's Action for Inclusive Development (PAfID)
- UNICEF

### Gender-Based Violence (GBV)

- Provincial Department of Women's Affairs (PDoWA)
- Provincial Health Department (PHD)
- Provincial/municipal courts
- Provincial and District Consultative Committee for Women and Children
- United Nations Population Fund (UNFPA) and UN Women
- Legal Aid of Cambodia (LAC)
- Cambodian Women's Crisis Center (CWCC)

### Rehabilitation

- Provincial Department of Social Affairs, Veterans and Youth Rehabilitation (PoSVY)
- Provincial branch of Persons with Disabilities Foundation and PRC
- Provincial Health Departments (PHD) and Health Care Facilities (HCF)
- International Committee of the Red Cross Cambodia (ICRC)
- OIC Cambodia
- Organisations of Persons with Disabilities (OPDs)

# MAIN ACTIVITIES



## GENDER-BASED VIOLENCE

- Improve access to services for survivors of violence, both persons with and without disabilities, through building technical capacity of frontline service responders.
- Strengthen multi-sectoral coordination in response to GBV.
- Pilot RESPECT WOMEN Framework (pilot the implementation of 7 strategies to prevent violence against women).
- Establish and operate one-stop service unit.
- Strengthen GBV referral services.
- Disseminate awareness of laws related to GBV and the rights of persons with disabilities in communities.
- Provide legal services, psychological counseling, psychotherapy, social services, health services, and safe shelters.
- Strengthen GBV case management and the use of digital systems to collect and manage GBV data.



## DISABILITY INCLUSION

- Support the functioning of P-DAC, including the preparation of work plans, budgets, reports, and monitoring of NDSP implementation.
- Increase the capacity of PoSVY on the implementation of disability identification programs and the use of disability data from the Disability Management Information System (DMIS).
- Work with sub-national authorities, OPDs/WWDFs to support persons with disabilities to access social services and other social assistance programs.
- Work with OPDs/WWDFs to support local initiative on disability inclusion in Commune Investment Program (CIPs).
- Capacity development of OPDs/WWDFs and local partners to better respond to the needs and advocate for the rights of persons with disabilities.
- Raise awareness about disability inclusion.



## REHABILITATION

- Support the process of the transition of physical rehabilitation services to be under health.
- Support the capacity of frontline services providers on the provision of rehabilitation services.
- Strengthen the coordination and referral between Health Care Facilities (HCFs) and PRC.



VISIT OUR  
WEBSITE

**Office Address:** ANINA Building, 3rd Floor, Street 271, Boeung Tumpun, Meanchey, Phnom Penh, Cambodia.  
**M:** (+855) 12 876 549  
**E:** [info@access2cambodia.org](mailto:info@access2cambodia.org)  
**[www.access2cambodia.org](http://www.access2cambodia.org)**